

Brass Compression Fittings



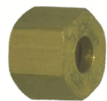
**260
Sleeve**

PART #	TUBE SIZE
260x2	1/8
260x3	3/16
260x4	1/4
260x5	5/16
260x6	3/8
260x7	7/16
260x8	1/2
260x10	5/8
260x12	3/4
260x14	7/8



**260-M
In Line Sleeve**

PART #	TUBE SIZE
260x2M	1/8
260x3M	3/16
260x4M	1/4
260x6M	3/8
260x8M	1/2



**261
Nut**

PART #	TUBE SIZE
261x2	1/8
261x3	3/16
261x4	1/4
261x5	5/16
261x6	3/8
261x7	7/16
261x8	1/2
261x10	5/8
261x12	3/4
261x14	7/8



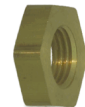
**295
Tube Insert**

PART #	TUBE SIZE
295x2	1/8
295x3	3/16
295x4	1/4
295x5	5/16
295x6	3/8
295x8	1/2
295x10	5/8



**21110
Long Nut**

PART #	TUBE SIZE
21110x2	1/8
21110x3	3/16
21611x4	1/4
21611x5	5/16
21611x6	3/8
21611x8	1/2
21611x10	5/8



**20102
Bulkhead Nut**

PART #	SIZE
20102x4	1/4



**274
Bulkhead Union
with Lock Nut**

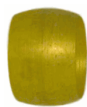
PART #	TUBE SIZE
274x4	1/4
274x6	3/8



**268
Male Connector**

PART #	TUBE SIZE	MALE PIPE
268x2	1/8	1/8
268x3	3/16	1/8
268x3x4	3/16	1/4
268x4	1/4	1/8
268x4x4	1/4	1/4
268x4x6	1/4	3/8
268x4x8	1/4	1/2
268x5	5/16	1/8
268x5x4	5/16	1/4
268x5x6	5/16	3/8
268x6x2	3/8	1/8
268x6	3/8	1/4
268x6x6	3/8	3/8
268x6x8	3/8	1/2
268x6x12	3/8	3/4
268x7	7/16	1/4
268x8x4	1/2	1/4
268x8	1/2	3/8
268x8x12	1/2	3/4
268x10x6	5/8	3/8
268x10x12	5/8	3/4
268x12	3/4	1/2
268x12x12	3/4	3/4
268x14	7/8	3/4

Brass Compression Fittings



20960
Air Brake
Sleeve (DOT)

PART #	TUBE SIZE
20960x4	1/4
20960x5	5/16
20960x6	3/8
20960x8	1/2
20960x10	5/8
20960x12	3/4



20961
Air Brake Nut
(DOT)

PART #	TUBE SIZE	THREAD SIZE
20961x4	1/4	7/16-24
20961x5	5/16	1/2-24
20961x6	3/8	17/32-24
20961x8	1/2	11/16-20
20961x10	5/8	13/16-18
20961x12	3/4	1-18



262
Double End
Union

PART #	TUBE SIZE	TUBE SIZE
262x2	1/8	1/8
262x3x2	3/16	1/8
262x3	3/16	3/16
262x4	1/4	1/4
262x4x2	1/4	1/8
262x4x3	1/4	3/16
262x5x4	5/16	1/4
262x5	5/16	5/16
262x6x4	3/8	1/4
262x6x5	3/8	5/16
262x6	3/8	3/8
262x7	7/16	7/16
262x8x6	1/2	3/8
262x8	1/2	1/2
262x10	5/8	5/8
262x10x6	5/8	3/8
262x10x8	5/8	1/2
262x12	3/4	3/4
262x14	7/8	7/8



263
Ball Check
Connector

PART #	TUBE SIZE	MALE PIPE
263x4	1/4	1/8
263x6	3/8	1/4



266
Female
Connector

PART #	TUBE SIZE	FEMALE PIPE
266x2	1/8	1/8
266x3	3/16	1/8
266x3x4	3/16	1/4
266x4	1/4	1/8
266x4x4	1/4	1/4
266x4x6	1/4	3/8
266x4x8	1/4	1/2
266x5	5/16	1/8
266x5x4	5/16	1/4
266x6x2	3/8	1/8
266x6	3/8	1/4
266x6x6	3/8	3/8
266x6x8	3/8	1/2
266x8	1/2	3/8
266x8x4	1/2	1/4
266x8x8	1/2	1/2
266x10	5/8	1/2
266x10x6	5/8	3/8
266x10x12	5/8	3/4
266x12	3/4	1/2
266x12x12	3/4	3/4
266x14	7/8	3/4



264
Union Tee

PART #	TUBE SIZE	TUBE SIZE	TUBE SIZE
264x2	1/8	1/8	1/8
264x3	3/16	3/16	3/16
264x4	1/4	1/4	1/4
264x5	5/16	5/16	5/16
264x6	3/8	3/8	3/8
264x6x6x4	3/8	3/8	1/4
264x8	1/2	1/2	1/2
264x8x8x6	1/2	1/2	3/8
264x10	5/8	5/8	5/8
264x12	3/4	3/4	3/4

Brass Compression Fittings



PART #	TUBE SIZE
265x2	1/8
265x3	3/16
265x4	1/4
265x5	5/16
265x6	3/8
265x6x4	3/8x1/4
265x8	1/2
265x10	5/8
265x12	3/4
265x14	7/8



PART #	TUBE SIZE	MALE PIPE
269x2	1/8	1/8
269x3	3/16	1/8
269x3x4	3/16	1/4
269x4	1/4	1/8
269x4x4	1/4	1/4
269x4x6	1/4	3/8
269x4x8	1/4	1/2
269x5	5/16	1/8
269x5x4	5/16	1/4
269x5x6	5/16	3/8
269x6	3/8	1/4
269x6x2	3/8	1/8
269x6x6	3/8	3/8
269x6x8	3/8	1/2
269x7	7/16	1/4
269x8x4	1/2	1/4
269x8	1/2	3/8
269x8x8	1/2	1/2
269x8x12	1/2	3/4
269x10x6	5/8	3/8
269x10	5/8	1/2
269x10x12	5/8	3/4
269x12	3/4	1/2
269x12x12	3/4	3/4
269x14	7/8	3/4



PART #	TUBE SIZE	FEMALE PIPE
270x2	1/8	1/8
270x3	3/16	1/8
270x4	1/4	1/8
270x4x4	1/4	1/4
270x5	5/16	1/8
270x5x4	5/16	1/4
270x6	3/8	1/4
270x6x2	3/8	1/8
270x6x6	3/8	3/8
270x6x8	3/8	1/2
270x8	1/2	3/8
270x8x4	1/2	1/4
270x8x8	1/2	1/2
270x8x12	1/2	3/4
270x10	5/8	1/2
270x10x12	5/8	3/4
270x12	3/4	1/2
270x12x12	3/4	3/4



PART #	TUBE SIZE	MALE PIPE
271x2	1/8	1/8
271x3	3/16	1/8
271x4	1/4	1/8
271x4x4x4	1/4	1/4
271x5	5/16	1/8
271x6	3/8	1/4
271x6x6x2	3/8	1/8
271x6x6x6	3/8	3/8
271x8	1/2	3/8
271x8x8x8	1/2	1/2
271x10	5/8	1/2
271x12	3/4	1/2



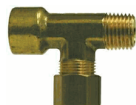
PART #	TUBE SIZE	MALE PIPE
272x2	1/8	1/8
272x3	3/16	1/8
272x4	1/4	1/8
272x4x4x4	1/4	1/4
272x5	5/16	1/8
272x5x5x4	5/16	1/4
272x6x6x2	3/8	1/8
272x6	3/8	1/4
272x6x6x6	3/8	3/8
272x8	1/2	3/8
272x8x8x8	1/2	1/2
272x10	5/8	1/2
272x12	3/4	1/2
272x12x12x12	3/4	3/4

Brass Compression Fittings



273
45° Male Elbow

PART #	TUBE SIZE	MALE PIPE
273x3	3/16	1/8
273x4	1/4	1/8
273x4x4	1/4	1/4
273x5	5/16	1/8
273x5x4	5/16	1/4
273x6	3/8	1/4
273x6x2	3/8	1/8
273x6x6	3/8	3/8
273x8	1/2	3/8
273x8x8	1/2	1/2
273x10	5/8	1/2



276
Tee With Internal and External Pipe

PART #	TUBE SIZE	PIPE THREAD
276x2	1/8	1/8
276x4	1/4	1/8



2905
Tee With External Pipe Thread on Run and Internal Pipe Thread on Branch

PART #	TUBE SIZE	PIPE THREAD
2905x4	1/4	1/8



2908
Female Branch Tee

PART #	TUBE SIZE	FEMALE PIPE
2908x4	1/4	1/8



59
Align Cap

PART #	TUBE SIZE
59x4	1/4
59x6	3/8
59x8	1/2



61
Align Nut and Sleeve

PART #	TUBE SIZE
61x2	1/8
61x3	3/16
61x4	1/4
61x5	5/16
61x6	3/8
61x8	1/2
61x10	5/8
61x12	3/4



260DS
Delrin Sleeve

PART #	TUBE SIZE
260DSx4	1/4
260DSx5	5/16
260DSx6	3/8
260DSx8	1/2
260DSx10	5/8
260DSx12	3/4



238
Plug

PART #	TUBE SIZE
238x4	1/4



2610
Pilot Control Nut

PART #	TUBE SIZE
2610x4	1/4



280
Sleeve

PART #	TUBE SIZE
280x2	1/8
280x3	3/16
280x4	1/4



281
Nut

PART #	TUBE SIZE
281x2	1/8
281x3	3/16
281x4	1/4